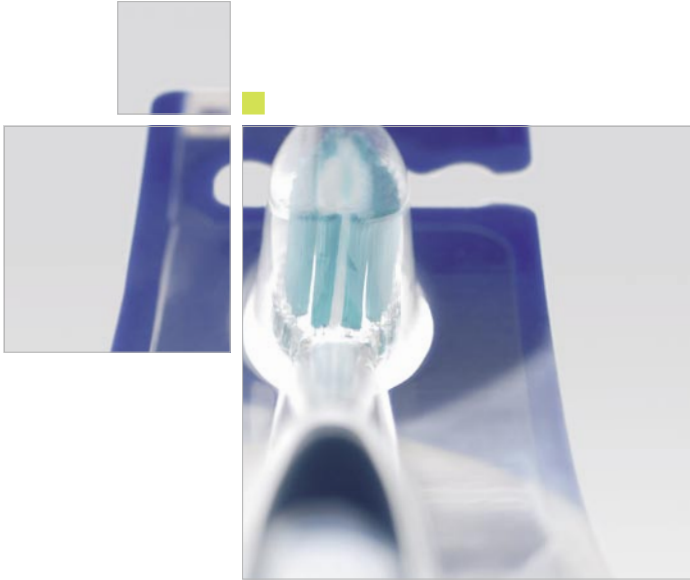


KBS-KF

Blister lines with chain guide - the packaging technology



KOCH BLISTER LINE KBS-KF

Blister line for large blisters with cover film of different materials.

The blister line KBS-KF - for in-line production of mono-material blister packs with cover film: absolutely trouble-free. In the choice of format and in the choice of materials that will be used for the blister packs. PE, PET, PVC, Tyvek, aluminum or lots other materials.



This is how the blister line of tomorrow works:

The blister film is guided through the forming station to the sealing station by a servo-driven gripper chain. The film is heated and formed in the forming station. The blisters are formed in-line, the products are placed into the blisters manually or automatically. The integrated card placing unit now places the card into the blister whereas in the sealing station the cover film is drawn off the roll, fed and sealed with the blister. The film lane with the finished blisters is cut after sealing with roller knives in longitudinal direction and separated by a lateral cutting device. Optionally blister, product and card detection can be integrated at any time.

The attachment of supplementary equipment as product feeding or end packaging is possible as well as the installation of a complete punch or a labelling unit.

For additional information please check our homepage www.koch-pac-systeme.com

COMPLEX DEMANDS – SIMPLE SOLUTIONS

The blister line for the tasks of tomorrow.

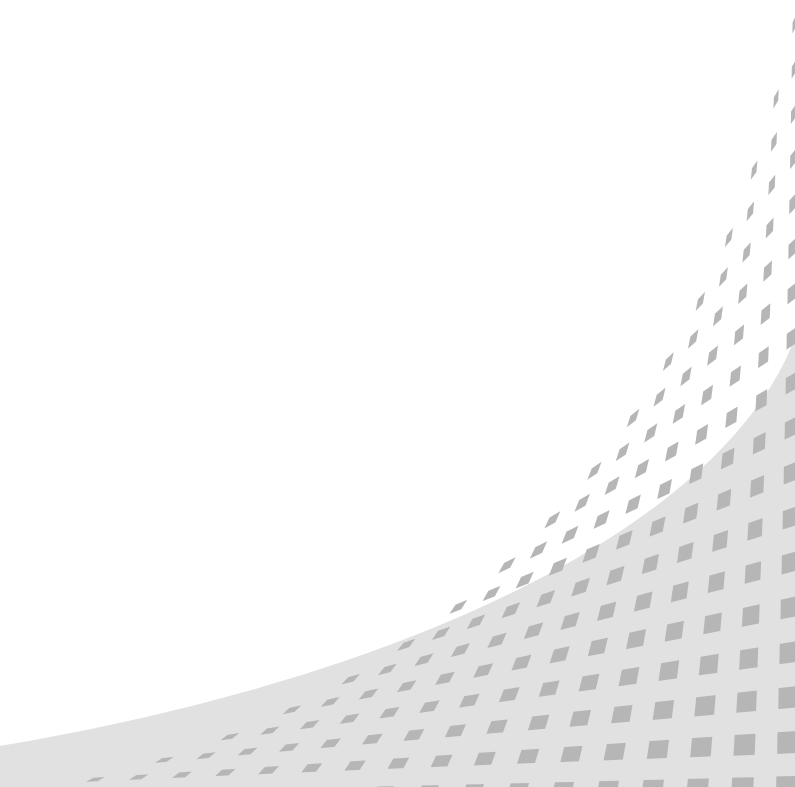
No, we can't see into the future. But we know that our customers demand high standards of their machines - today and tomorrow. With know-how and innovative power we have developed the KBS-KF. A blister line which combines several future-oriented technologies in one machine:



If environmentally friendly mono-material blister-packs with recyclable blisters of PET without any additional coatings and with various sealing technologies, or soft-PVC blisters for medical use, also for clean room conditions. A fully automated blister line with numerous integration and extension possibilities as variable as can be. And all this packed in an operator convenient and high-quality design.



Decide yourself for the packaging technology of the future.



KBS-KF

Forming format
300 x 500 mm

Forming depth
67 mm

Sealing format
300 x 500 mm

Output
25 strokes/min.,
depending on blister
material, blister form
and sealing time

IPC control
programmed according
to IEC 61131-3

HMI
with 15" touch screen

Technical data

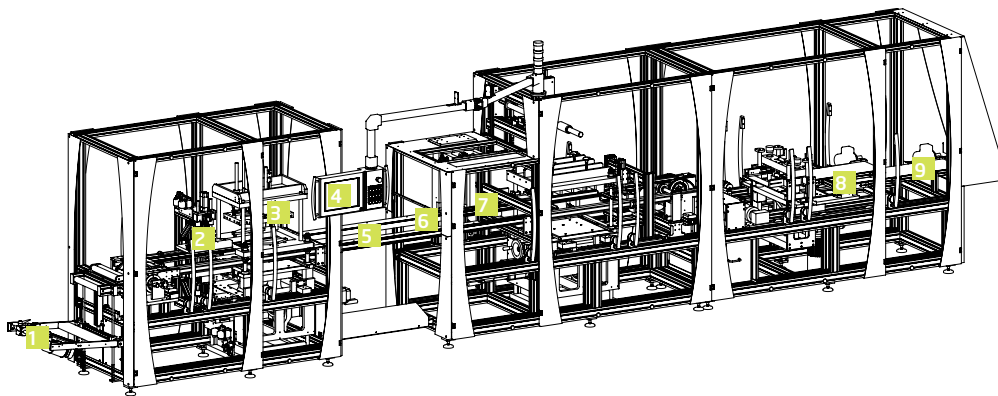
Advantages of this machine technology

- Very high cycle rate
- Low tool costs, as no pallets or tool carrier required
- Quick change-over
- Very quiet because various servo-motor drives
- Easy to service due to modular construction and modern machine design
- Latest PC technology with operator convenient control via 15" touch screen
- Remote diagnostics via internet or modem



Reference products KBS-KF:

medical devices, batteries,
tooth brushes, light bulbs, cosmetics,
tools, drugs, electrical appliances,
razors, stationery, medical care,
health care



Details are subject to change due to product development.

- 1** Film roll with film drawing
- 2** Heating station
- 3** Blister forming station
- 4** Operating personnel with touch screen
- 5** Product insertion section
- 6** Card placing unit
- 7** Sealing station with cover film feeding
- 8** Lateral cutting device
- 9** Discharge belt



Tyvek Blister



Monomaterial Blister

■ Packaging Competence and Automation

KOCH Pac-Systeme GmbH
Ringstraße 14
72285 Pfalzgrafenweiler, Germany
Phone +49 (0)7445 181-0
Fax +49 (0)7445 181-50
info@koch-pac-systeme.com
www.koch-pac-systeme.com

KOCH Pac-Systeme GmbH
Massachusetts Avenue 22
66953 Pirmasens, Germany
Phone +49 (0)6331 1433-0
Fax +49 (0)6331 1433-29
info@koch-pac-systeme.com
www.koch-pac-systeme.com

KOCH Packaging Systems LP
44 Indian Lane East
Towaco, NJ 07082
Phone (973)541-7312
Fax (973)402-2144
info@KochPackaging.com
www.KochPackaging.com

Uhlmann Koch Asia LLP
1, Kim Seng Promenade
14-05 Great World City, Singapore, 237994
Phone +65 6734 3123
Fax +65 6734 8412
Koch.Singapore@koch-pac-systeme.com
www.koch-pac-systeme.com