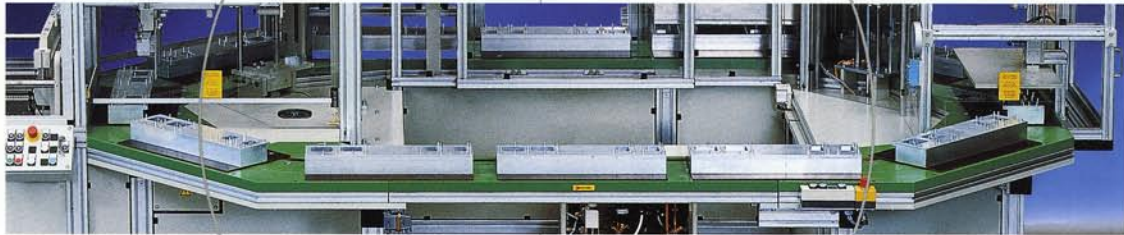




**Packaging with future** ■

**KBS-PT**



■ **Blister line KBS-PT**

## Packaging with future:

## The KOCH blister line KBS-PT.

## The packaging artist with all-round talent.

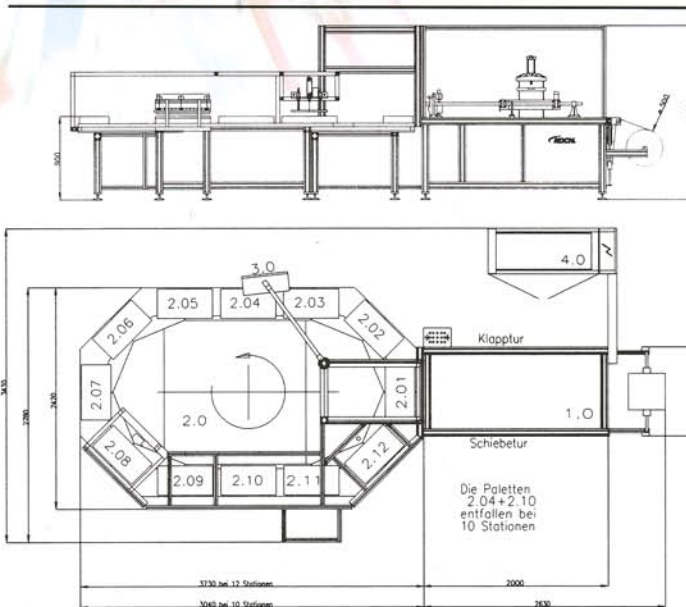


The KOCH blister line KBS-PT ensures very short change-over times and a flexible use of the tool carriers. The forming and sealing tools are pneumatically tensed and can thus be changed rapidly and easily. After the tool change the line will be set-up automatically by NC axes and servo-drives.

The extension of additional equipment and product feeds is possible without any problems.

The line can be used as complete blister line and as sealing machine with pre-fabricated blisters or Nurpack blisters.

The line is controlled by an IPC with touch screen. The simple and intuitive menu direction reduces the training period to a minimum. Due to the clear text display and the graphic representation of the line, the operator has at any time an exact overview on the condition of all stations.



### Scheme of the KBS-PT:

1.0	Blister forming machine	2.09	Sealing station
2.0	Transfer line	2.10	Free, e. g. labelling unit or printer
2.01	Blister transfer	2.11	Product discharge
2.02	Nurpack inserter	2.12	Frame card or Nurpack plaser
2.03-2.06	Manual insertion places and/or automatic product feed	3.0	Operating panel
2.07	Free, e. g. product control	4.0	Control cabinet
2.08	Card inserter		

Subject to modifications.

# Technical data **KB / KS**

Blister forming machine	KB 25-50/47/2	KB-NC
	KB 25-50/67/2	25-50/67/4*
Forming station:	2 pillar station	4 pillar station
Max. forming area:	250 x 500 mm	250 x 500 mm
Min. forming area:	100 x 50 mm	100 x 50 mm
Max. forming depth:	47 or 67 mm	67 mm
Contact heating:	6 kW	6 kW
Film feed:	pneumatic	servo-drive
Operating pressure:	5 - 6 bar	5 - 6 bar
Air consumption/cycle:	approx. 16 l at 6 bar	approx. 9 l at 6 bar
Max. output:	18 cycles/min.**	20 cycles/min.**
Connected load:	approx. 7 kW	approx. 10 kW
*incl. quick-change device with lateral tool insertion		
**dependent on blister form and blister size		

Blister transfer	BU-PT-60/2	BU-PT-NC-60/2
	Max. transfer width:	600 mm
Number of pliers:	2***	2***
Drive:	pneumatic	servo-drive
Air consumption/cycle:	approx. 3.6 l at 6 bar	approx. 1.5 l at 6 bar
Operating pressure:	5 - 6 bar	5 - 6 bar
Max. output:	18 cycles/min.**	20 cycles/min.**
**dependent on blister form and blister size		
***basic equipment		

Sealing machine	KS-PT 32-60/10	KS-PT 32-60/12
	Max. sealing area:	320 x 600 mm
Number of sealing pallets:	10 or 12	
Pallet transport:	step gearbox, frequency regulated	
Sealing heating:	6 kW	
Max. sealing:	55 kN (standard)	95 kN (option)
Operating pressure:	5 - 6 bar	
Air consumption/cycle:	approx. 30 l at 6 bar	
Output:	14 cycles/min.**	
Connected load:	approx. 7.3 kW	
**dependent on blister form and blister size		

Complete line (possible combinations)	KBS-PT resp. KBS-PT-NC	
		KB
	KB	25-50/67/2 with KS-PT 32-60/12
	KB-NC	25-50/67/4 with KS-PT 32-60/10
	KB-NC	25-50/67/4 with KS-PT 32-60/12

Control
IPC control over touch screen with 12.1" TFT display, programmed in IEC 1131-3

Blister forming machine	KB-PT - xx - xx - xx / xx / x
NC = servo-drive blister feed	
Max. blister length in cm	
Max. blister width in cm	
Max. blister depth in mm	
Type of forming station	2 = 2 pillar station 4 = 4 pillar station

Example: KB-PT-NC-25-50/67/4

Blister transfer	BU-PT - xx - xx / xx
NC = servo-drive blister feed	
Pallet width in cm	
Number of pliers	

Example: BU-PT-NC-60/4

Sealing machine	KS-PT - xx - xx / xx / xx
Pallet width in cm	
Pallet length in cm	
Number of pallets (10, 12)	
Tool height in mm (50, 70, 90)	

Example: KS-PT-32-60/12/70