

SEALING

- SEMI OR FULLY AUTOMATIC
- UNIFORM OR RANDOM CASE SIZES
- TOP AND BOTTOM SEALING
- SIDE OR VERTICAL SEALING
- ACCESSORIES



Case sealers for uniform case sizes

T-2000 top and bottom sealing

The machine is easy to clean and resistant to vapour and moisture.

Basic models

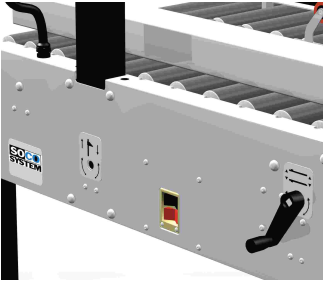
The compact machine is available in two basic models T-2000 and T-2000 Maxi. T-2000 Maxi is suited for use in industries handling large cases.

- The machine is very easy to adjust for current case size and adjustment can be carried out from both sides.
- Easy change of tape.
- Compact design.
- Easy and economical maintenance.
- Extensive accessory programme, e.g. braked castors, packaging tables, and conveyors.

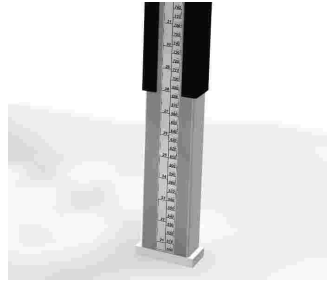


Specifications	T-2000 5-5-9	T-2000 5-8-9	T-2000 Maxi 7-5-9	T-2000 Maxi 7-8-9
Case dimensions*				
Max. (LxWxH) mm	∞ x 520 x 520	∞ x 515 x 820	∞ x 720 x 520	∞ x 720 x 820
Min. (LxWxH) mm	140 x 90 x 90	140 x 90 x 90	140 x 130 x 100	155 x 130 x 100
Tape overlap				
70 mm	●	●	●	●
50 mm	○	○	○	○
Tape width				
25 - 30 mm	○	○	○	○
38 - 50 mm	●	●	○	○
50 - 75 mm	○	○	●	●
Side drives				
Height 50 mm	●	●	○	○
Height 80 mm	○	○	●	●
Weight kg	150	155	160	165
Capacity*	Max. 30/ min.			
Electric specifications	3 x 230/400 V, 50-60 Hz, or 3 x 415/460 V, 50-60 Hz. Connected load 0.3 kW. Other specifications available upon request.			
Tape diameter	Max. 385 mm.			
● Standard ○ Optional				
* Depending on the construction and quality of the case.				
Subject to alteration.				

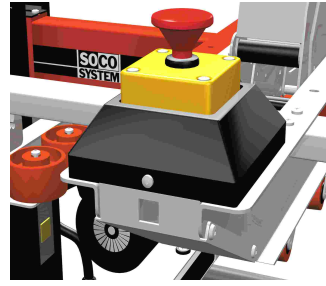
Case sealers for uniform case sizes



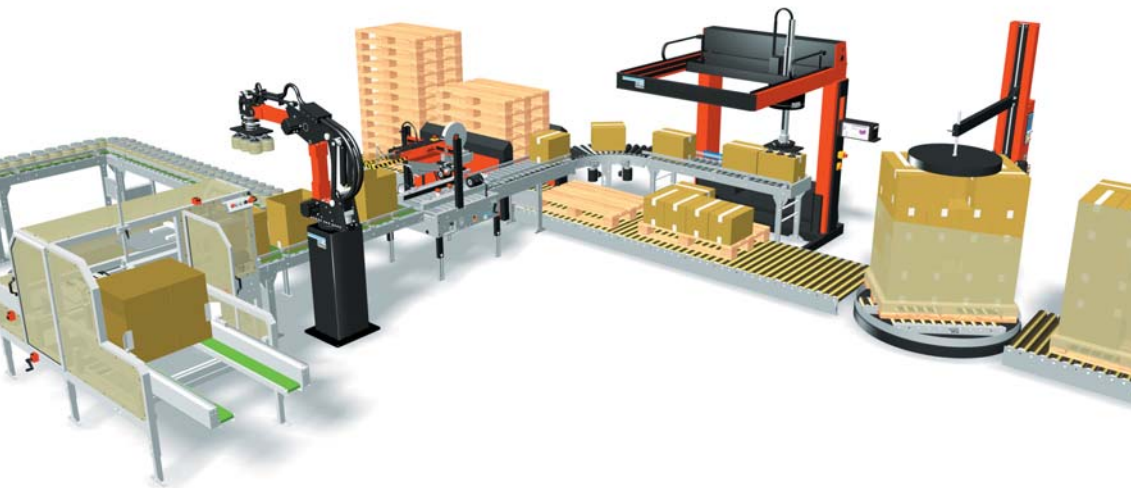
Crank handle adjustment for case size. The machine can be adjusted from both sides.



Tape measure on the legs of the machine for easy and precise working height adjustment.



Side pressure guides and centrally placed emergency stop.



The SOCO SYSTEM

From case erecting to pallet securing

The SOCO SYSTEM product range handles cases, plastic crates, trays, pallets, and many of your products.

The SOCO SYSTEM product range is designed to increase efficiency and eliminate physically strenuous work functions.

One system – one supplier

There are many advantages of full product compatibility; less paperwork and no time wasted in adapting products from different suppliers.

Meet your future requirements

Add modules and functionality, relocate modules, or whatever fits your future needs.

Call us, mail us, or visit us at www.socosystem.com



Your local SOCO SYSTEM dealer:

Arctec (Pty) Ltd.
P.O. Box 70636, Bryanston, 2021

11 Barbeque Terrace
Dytchley Road, Kyalami
Midrand, South Africa

S26° 00' 09.11" E28° 04' 22.18"

COPYRIGHT SOCO SYSTEM 2006



Head office:
SOCO SYSTEM A/S
Helgeshoej Allé 16D
DK-2630 Taastrup
Denmark
Tel +45 43 52 55 66
Fax +45 43 52 81 16
info@socosystem.com
www.socosystem.com



Geberit AG, Switzerland



Sig. Ágústsson, Iceland



Laru, Germany



Toms, Denmark



Rioja, Spain



Bouché Père & Fils, France



United Milk, England



Altmark Käserei, Germany