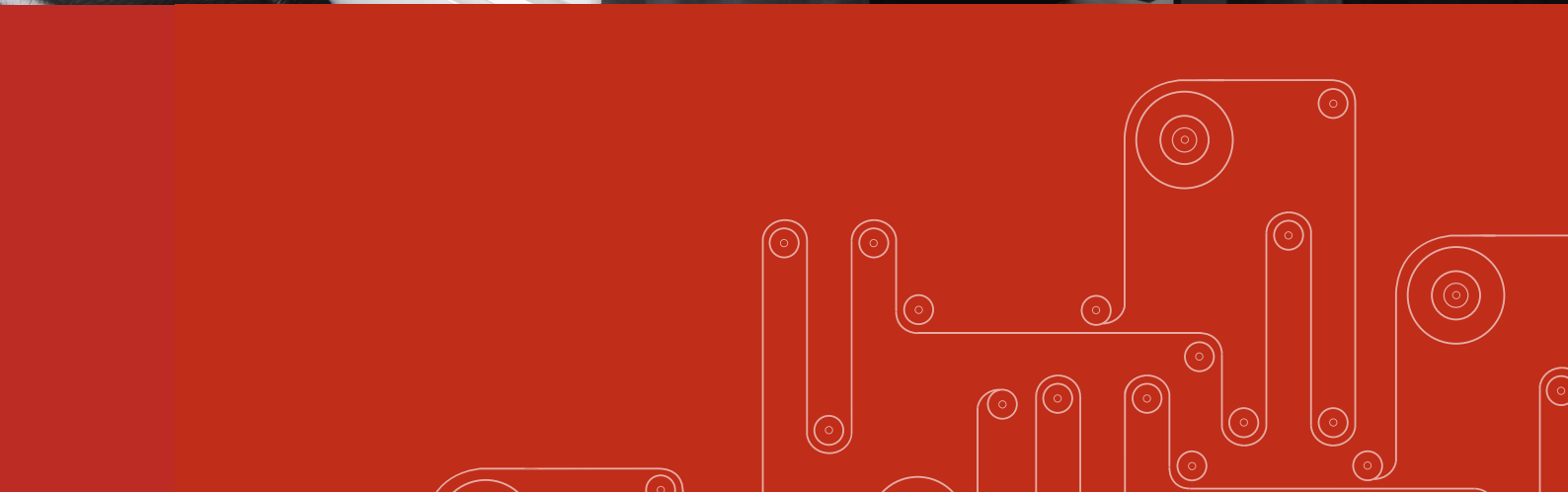
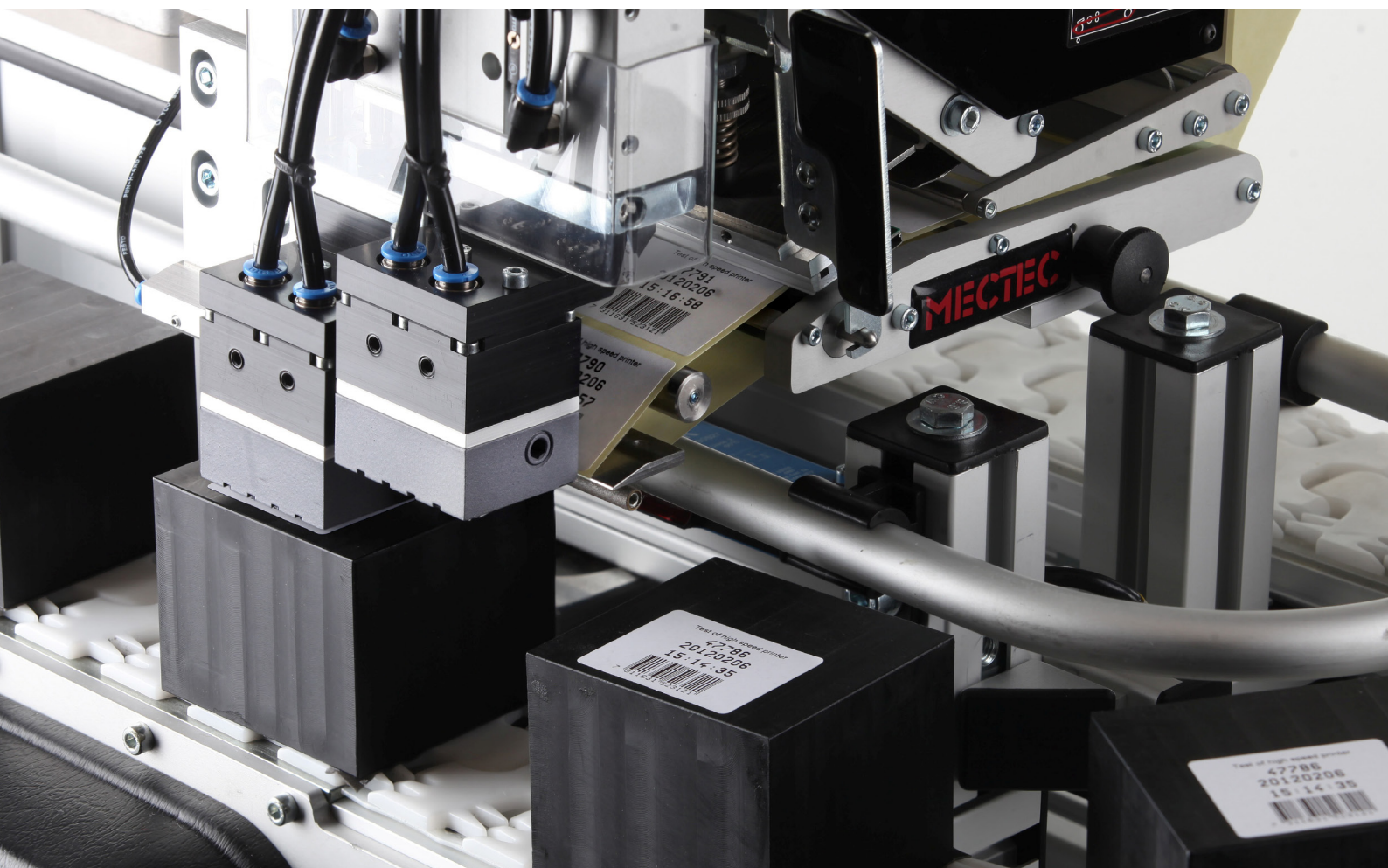


MECTEC

High Speed Labelling

Solutions and services tailored to your business



Faster labelling at your service

More speed and less downtime

The demand for faster Print & Apply solutions increases along with higher production rates in manufacturing and distribution operations. MECTEC offers both standard and customized High Speed solutions to meet those demands. Regardless of application, MECTEC's reliable and robust Print & Apply units are designed to deliver even in the most harsh conditions.

Many of our popular high speed solutions are based on our Dual Pad concept which doubles the amount of labels on each roll. This allows an increased production rate while downtime for switching labels is halved and printhead lifetime is doubled. For further information, please contact your nearest MECTEC sales contact who will be happy to help you.

Easy to integrate in existing production line

Available in right and left mounted versions for better operator comfort

Labelling 100 products/min

Dual Pad option for halved downtime and doubled printhead lifetime

Easy and intuitive interface for communication with other systems

Quick and easy access for service

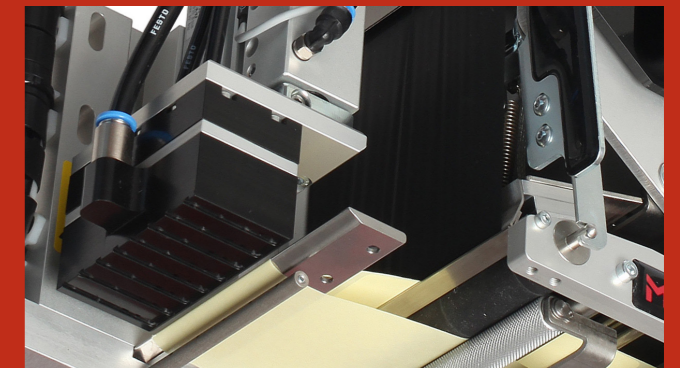
Solutions for Master/Slave and Dual Print & Apply



Options to support your solution

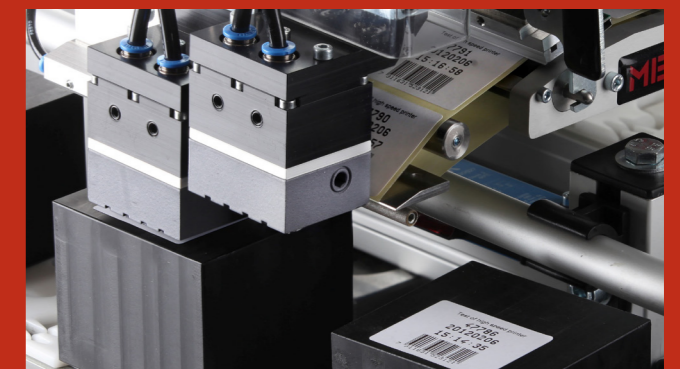
Single Pad

Single blow pad on fast moving cylinder ensures high throughput with uncompromised accuracy.



Dual Pad

Perfect solution for labels up to 50 mm in width; synchronized pads allow simultaneous printout of two labels for halved downtime and doubled printhead lifetime.



Scan the QR code and watch High speed labelling on our YouTube channel. Or visit: www.youtube.com/MectecElektronik



Technical data

For more information and details regarding a specific solution, please contact a MECTEC representative close to you, who will be happy to support you. You will find contacts on www.mectec.com

APPLICATOR

Technologies: Blow

Label sizes: Custom. Single or Parallel on reel

Pneumatics: 6 bar compressed air

PRINTER

Technologies: Thermal transfer, Direct thermal or Non-Printing

Resolutions: 8 or 12 dots/mm (200/300dpi)

Speed (max): 300 mm/s

COMMUNICATION

Interface: 2 x RS232, 1 x USB 2.0, Ethernet (optional),

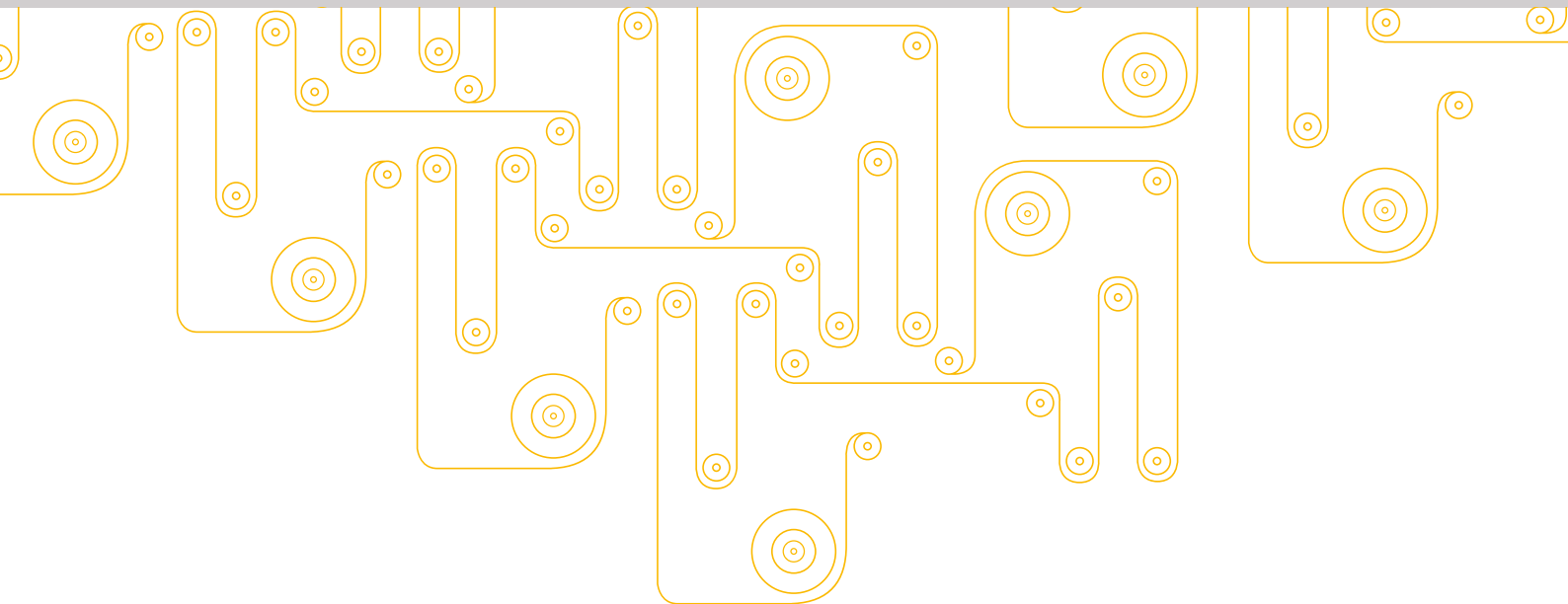
31 inputs (PNP), 21 (NPN) + 10 (relay) outputs

Graphical display with 25 languages

DIMENSIONS

P&A: 670 x 520 x 245 mm

Controller: 406 x 278 x 129 mm



MECTEC