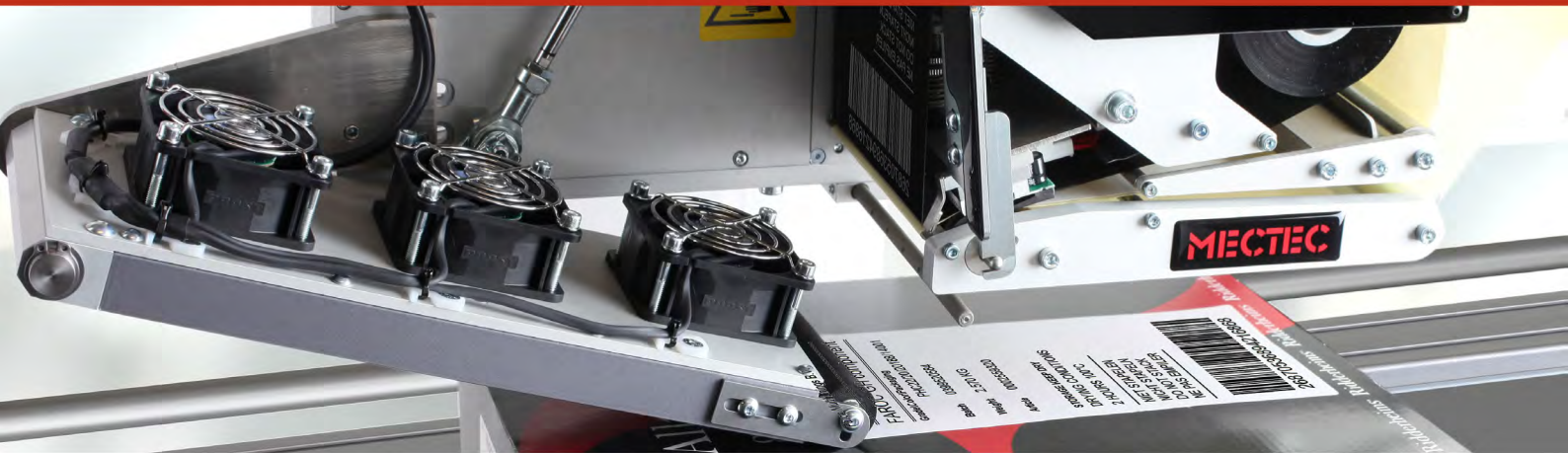


# WR100

A reversed wipe solution within the MECTEC standard range



WR100 is a complete solution for automated case and carton labelling with an applicator that wipes on the label. The WR100 is ideal when you need to print and apply variable lengths of labels on moving products.

The WR100 has a modular and compact design, making it easy to integrate into existing production lines, even if you have limited space. The solution peels the label from the liner; then carefully applies it onto the product or case when it passes by on a conveyor.

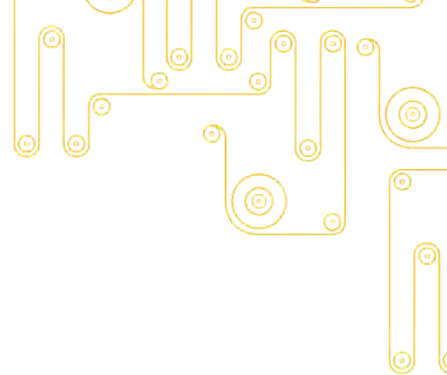


## KEY BENEFITS

- Versatile solution for automated top, bottom or side labelling.
- Available in both left and right version for improved operator friendliness.
- Modular and compact design to optimize operator comfort and safety.
- Can apply variable lengths of labels
- Handles moving products.

**MECTEC**

# Technical Specification



Models	WR100
Type	Wipe, reversed
Possible label positions	Top, Bottom, Side or Corner
Number of labels per product	1
Models	Left or Right handed version
Technologies	Thermal Transfer or Direct Thermal capability
Print resolution	12 dots/mm (300 dpi)
Max print width	107 mm
Max width of backing paper	114 mm
Max ribbon width	115 mm
Max ribbon roll length	450 m
Ribbon rolled	Ink-out
Max label roll outer diameter	305 mm
Label roll inner diameter	76 mm
Minimum label gap	3 mm
Pad sizes (width x length)	110 x 300 mm
Label widths allowed	40 to 110 mm
Label lengths allowed	60 to 300 mm
Max operating length (stroke)	90 mm
Typical labels printed and applied/min	100 x 300 mm label Distance to product: 80 mm 20 labels per minute  100 x 100 mm label Distance to product: 50 mm 50 labels per minute
Recom. max linear speed of conveyor	60 m/min
Input air pressure	6 bar - clean dry air
Typical air consumption	50 l/min
Max air consumption	200 l/min
Dimensions (Length x Height x Width)	741 x 614 x 258 mm
Weight kg (incl control unit)	30 kg
Communication interface	2 x RS232, 1 x USB, Ethernet TCP/IP
I/Os	31 Inputs and 31 Outputs
Input voltage	90-250VAC 50Hz
Operating temperature	5°C to 40°C
CE approved	●

<https://www.youtube.com/user/ArctecSA>



Follow us on YouTube and learn more about standard and customized solutions in different application areas.



## Johannesburg Office

Unit 11, Barbeque Terrace, Dytchley Road, Barbeque Downs, Kyalami, Midrand 1685, South Africa  
Tel. +27(0) 11 466 2468 • Fax. +27(0) 11 466 2080  
email: [info@arctec.co.za](mailto:info@arctec.co.za) • [www.arctec.co.za](http://www.arctec.co.za)

## Cape Town Office

Unit 25, River's Edge Business Park, Western Cape, South Africa  
Tel. +27(0) 21 946 4745 • Fax. +27(0) 21 946 2405  
email: [info@arctec.co.za](mailto:info@arctec.co.za) • [www.arctec.co.za](http://www.arctec.co.za)